

# R

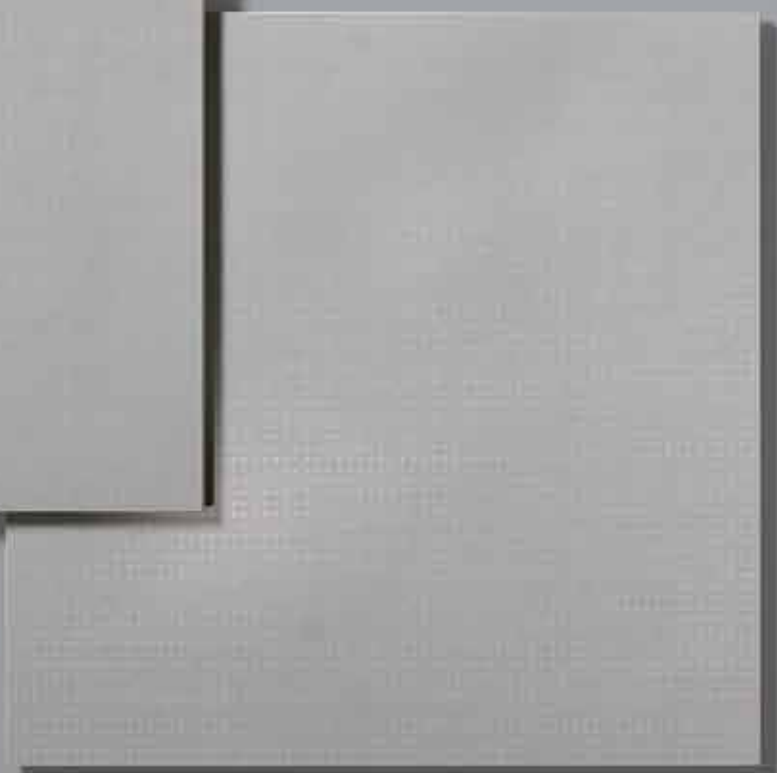
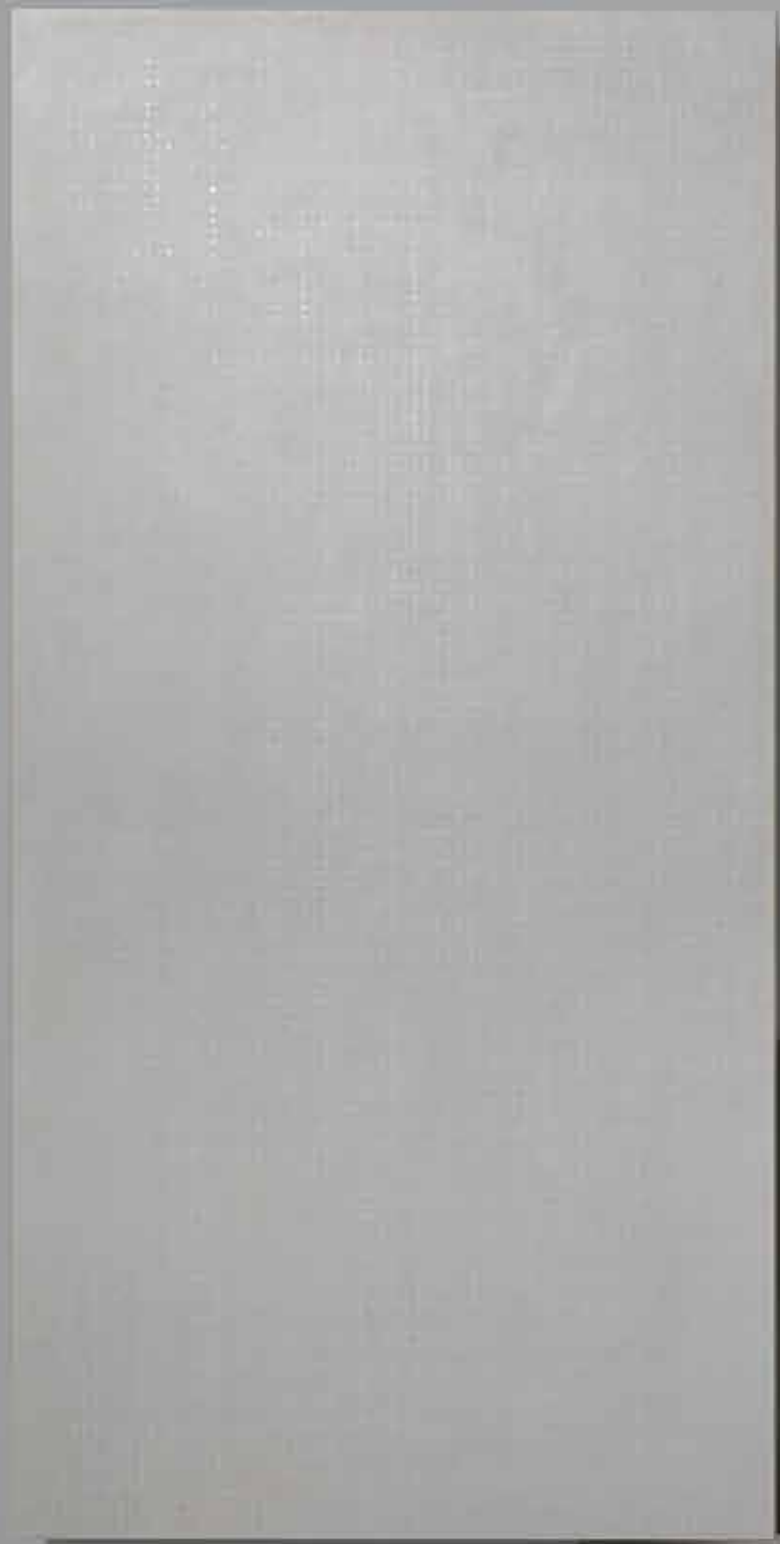


## ROOY



**FAP**  
CERAMICHE  
Naturalmente casa.

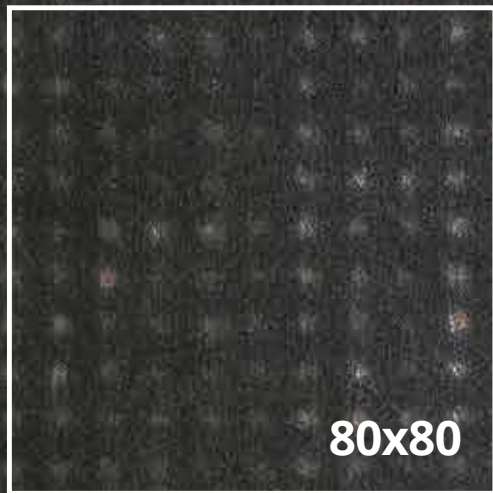
**ROOY**



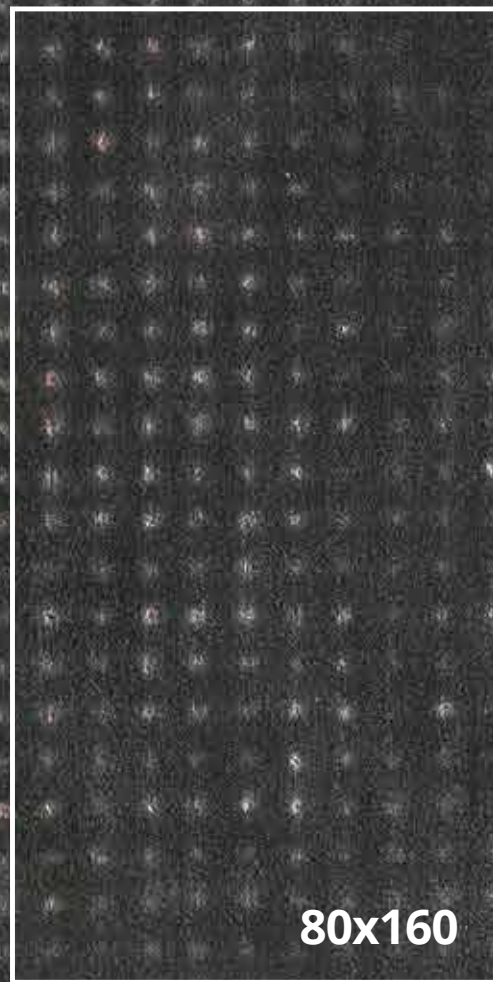
# ROOY

ORIGINAL, STYLISH, CONTEMPORARY.

# COLOURS & SIZES



80x80



80x160

DARK

TAUPE

WHITE

GREY

**STYLISH &  
EXPRESSIVE  
SPACE**





**FOR FLOOR  
ROOY GREY**



# WARM & ELEGANT LIVING ROOM





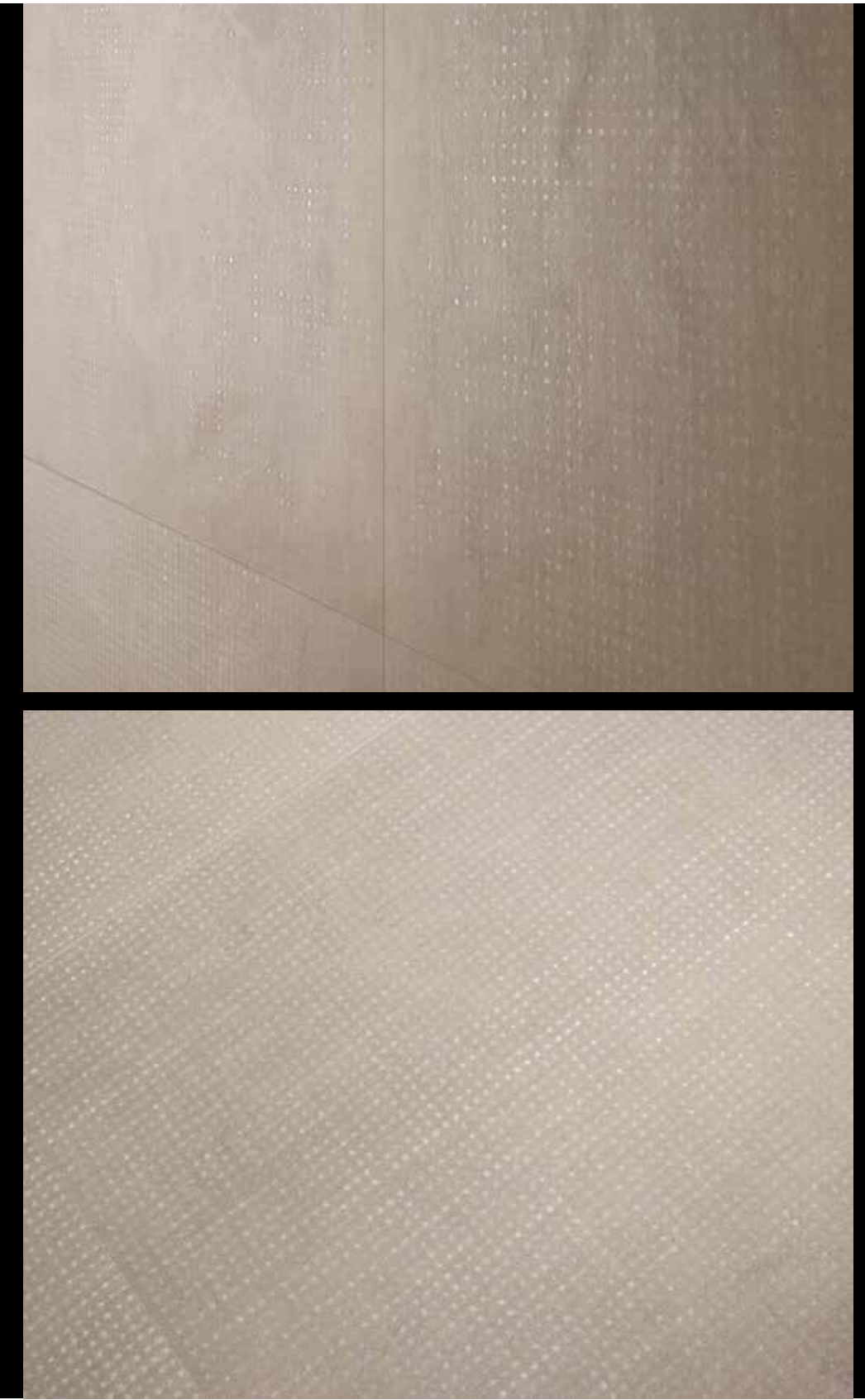
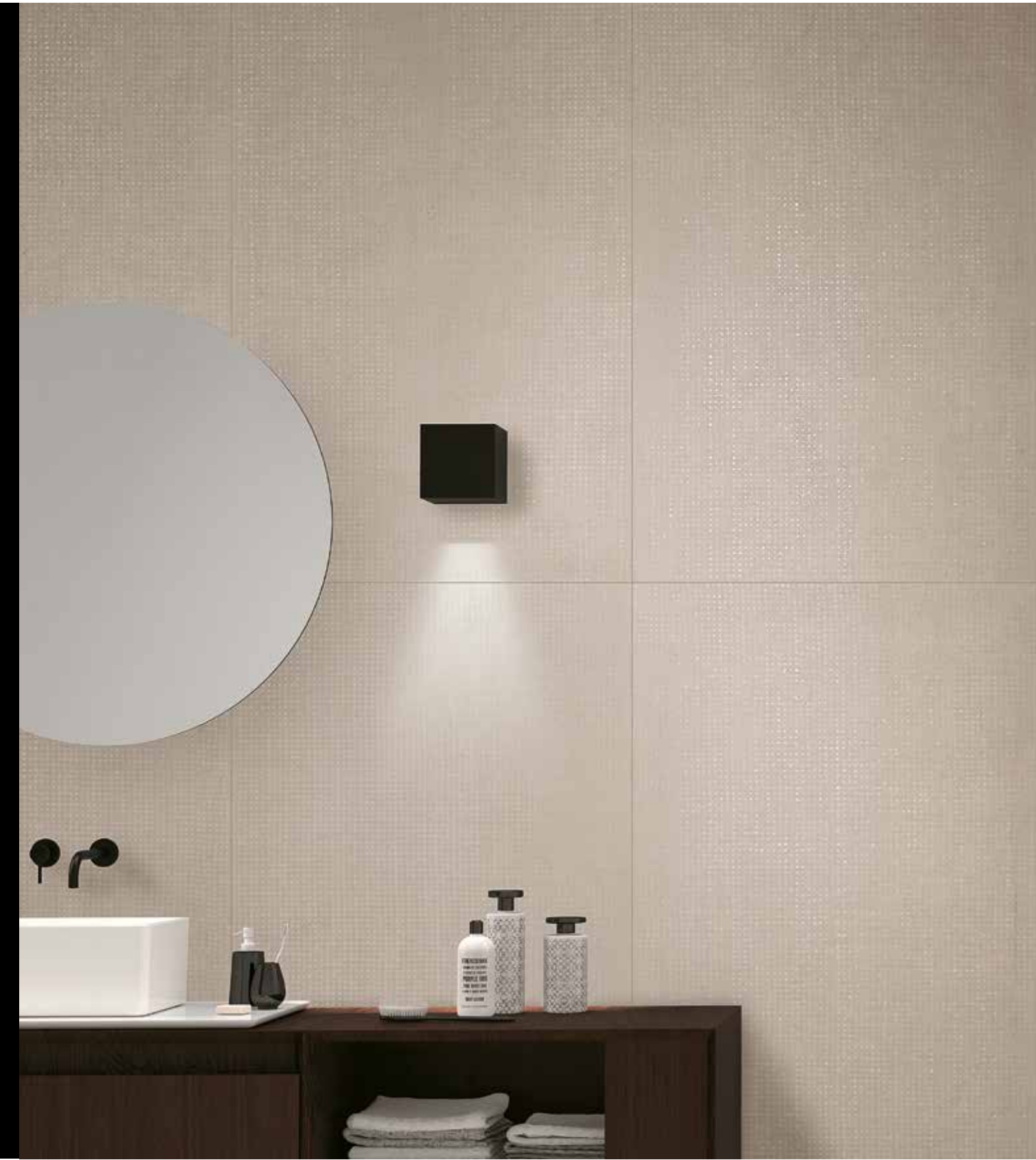
# SOPHISTICATED BATHROOM





**FOR WALLS**  
**ROOY DARK & TAUPE**  
**FOR FLOOR**  
**ROOY DARK**  
**DECORATIONS**  
**WEB DARK**





---

**CONTEMPORARY  
BATHROOM  
WALL & FLOOR  
ROOY TAUPE**

---



# **BAKERY HOUSE**

**ROOY PERFECT FOR PUBLIC AREAS**



**FOR FLOOR & FURNITURE**  
**ROOY TAUPE**

# EASY & CHIC SHOP



Wall & Floor: Rooy White



**FOR WALL  
& FLOOR  
ROOY WHITE**

# SIAMO CERAMICA

UNA SCELTA CONSAPEVOLE

# WE ARE CERAMICS

A MINDFUL CHOICE

## SICURA PER LA SALUTE

A differenza di altri materiali non contiene plastica, amianto e formaldeide e non rilascia nell'ambiente sostanze organiche pericolose.

## IL MASSIMO DELL'IGIENE

Facile da pulire, non assorbe, non si macchia e resiste ai detergenti più aggressivi.

## NON BRUCIA

La ceramica è in classe A1 di reazione al fuoco: non si infiamma e in caso di incendio non produce gas e fumi tossici.

## SAFE FOR HEALTH

Unlike other materials, it does not contain plastic, asbestos and formaldehyde and does not emit hazardous organic substances into the environment.

## MAXIMUM HYGIENE

Easy to clean, non-absorbent, stainproof and resistant to aggressive detergents.

## DOES NOT BURN

Ceramic has a Class A1 reaction to fire: it does not ignite and in case of fire, does not give off smoke or toxic gases.

## RESISTE A TUTTO

Non si usura per il calpestio, non si graffia, non si ammacca e il colore non si altera nemmeno se esposta ai raggi solari.

## VERSATILE

Il design, le superfici, i formati della ceramica la rendono ideale per rivestire pareti e pavimenti di tutti gli ambienti. È un ottimo conduttore termico, perfetto per il riscaldamento a pavimento.

## ECOLOGICA

Il processo di produzione rispetta i più rigorosi standard ambientali dell'Unione Europea.

## RESISTANT TO EVERYTHING

Does not wear down under foot traffic, does not scratch, does not stain, it does not dent and the colour does not change even when exposed to the sun's rays.

## VERSATILE

The design, surfaces, sizes of ceramic make it ideal for covering wall and floors in virtually any environment. It is an excellent thermal conductor, which makes it an ideal choice for underfloor heating.

## ECO-FRIENDLY

The production process complies with the strictest environmental standards of the European Union.

comunicazione realizzata in partnership con:  
communication carried out in partnership with:

**ceramica** info  
[www.ceramica.info](http://www.ceramica.info)



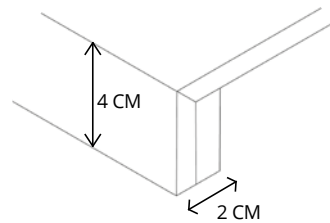
# GRES PORCELLANATO PEZZI SPECIALI

## PORCELAIN STONEWARE TRIMS

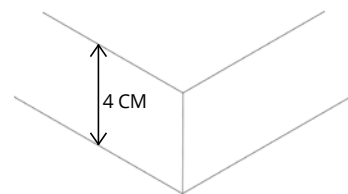
GRÈS CÉRAME PIÈCES SPÉCIALES / FEINSTEINZEUG SPEZIELLE TEILE / GRES PORCELÁNICO PIEZAS ESPECIALES / СПЕЦИАЛЬНЫЕ ЭЛЕМЕНТЫ ИЗ КЕРАМОГРАНИТА



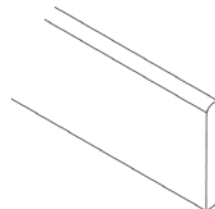
battiscopa sagomato



scalino



scalino Angolare



battiscopa

# DESTINAZIONE D'USO DESTINATION OF USE

UTILISATION PRÉVUE / VERWENDUNGSZWECK / DESTINOS DE USO / ОБЛАСТЬ ПРИМЕНЕНИЯ



### MEDIUM WALKING

**ambienti commerciali medi** con accessi non diretti con l'esterno o protetti da zerbini come ristoranti, bar, negozi, hotel, biblioteche, business lounge, banche, ad esclusione di passaggi obbligati. **Ideale anche per ambienti residenziali.**

### MEDIUM WALKING

**commercial environments with medium foot traffic:** with non-direct outside access or access protected with doormats, such as restaurants, bars, shops, hotels, libraries, business lounges, banks, except for areas with obligatory passages. **Also ideal for residential settings.**

**MEDIUM WALKING espaces commerciaux soumis à un piétinement moyen** avec accès non directs de l'extérieur ou protégés par des paillasons, tels que les restaurants, les cafés, les boutiques, les hôtels, les bibliothèques, les espaces affaires et les banques, à l'exception des lieux de passage obligatoires. Idéal aussi dans les espaces résidentiels. / **MEDIUM WALKING Gewerberäume mit mittlerer Begehungsfrequenz:** Räumlichkeiten ohne direkten Zugang von außen oder durch Fußmatten geschützte Bereiche wie Restaurants, Bars, Geschäfte, Hotels, Bibliotheken, Business Lounges und Banken mit der Ausnahme von Durchgangsbereichen. Auch für den Wohnbereich ideal. / **MEDIUM WALKING ambientes comerciales medios:** con accesos indirectos al exterior o protegidos por felpudos como restaurantes, bares, tiendas, hoteles, bibliotecas, business lounge, bancos, exceptuándose los pasajes obligatorios. Perfecto también para ambientes residenciales. / **MEDIUM WALKING деловые помещения со средним уровнем проходимости:** без прямого выхода на улицу или защищенные входными ковровыми покрытиями: рестораны, магазины, гостиницы, библиотеки, бизнес-залы, банки, за исключением обязательных зон прохода. Идеально подходит для жилых пространств.





Rooy White V2



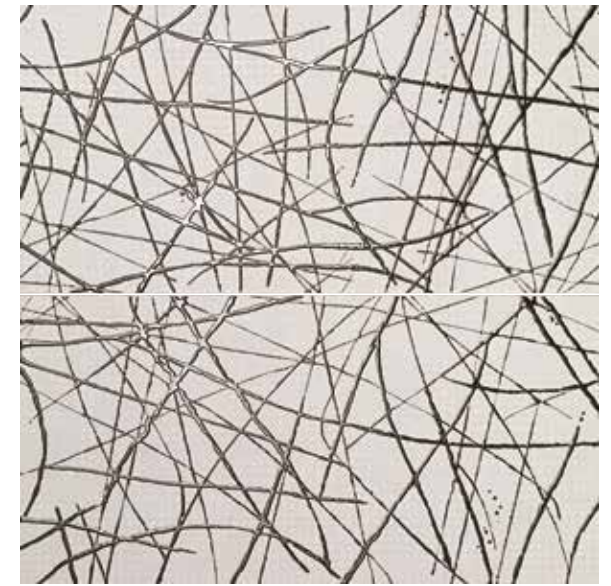
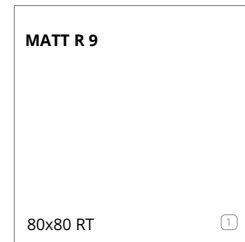
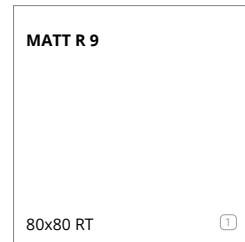
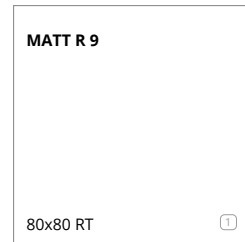
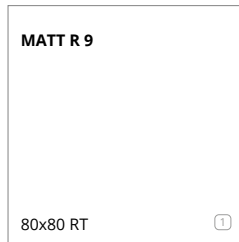
Rooy Grey V2



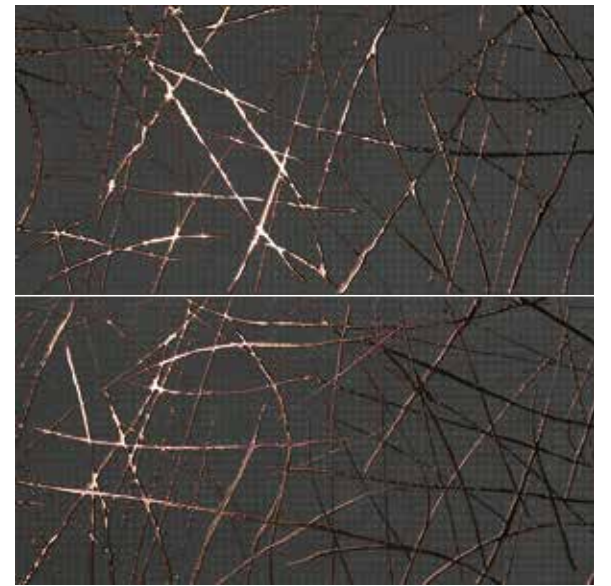
Rooy Taupe V2



Rooy Dark V2



Rooy White Web Inserto Mix 2 40x160

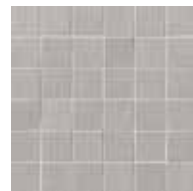


Rooy Dark Web Inserto Mix 2 40x160

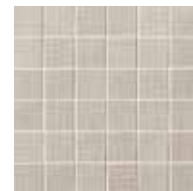
## MOSAICO



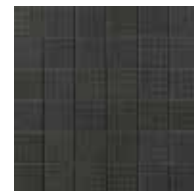
Rooy White Macromosaico 30x30



Rooy Grey Macromosaico 30x30



Rooy Taupe Macromosaico 30x30



Rooy Dark Macromosaico 30x30



5 x 5 cm



Rooy White Web Mosaico 30x30



Rooy Grey Web Mosaico 30x30



Rooy Taupe Web Mosaico 30x30



Rooy Dark Web Mosaico 30x30



2,9 x 2,9 cm

## TRIMS

ROOY	WHITE	GREY	TAUPE	DARK
Battiscopa 7,2x80 RT 3"x31 1/2"	5	5	5	5
Battiscopa Sagomato DX e SX 7,2x30 RT 3"x11 3/4"	6	6	6	6
Scalino 33x80 RT 13"x31 1/2"	7	7	7	7
Scalino Angolare 33x33 RT 13"x13"	7	7	7	7

	Unità di vendita Sales unit	MQ./Box	PZ./Box	Kg/Box	Box/PL
1	1 Box	1,280	2	24,90	48
2	1 Box	1,280	4	24,90	28
3	1 Box	0,540	6	12,48	60
4	1 Box	-	1 MIX	12,45	-
5	1 Box	ml 6,40	8	8,24	-
6	1 Box	-	8	3,55	-
7	1 Box	-	2	-	-

## Gres Porcellanato - Standard EN 14411 (ISO 13006) Annex G Group BIa, E ≤ 0,5%

Porcelain. / Grès cerame. / Feinsteinzeug. / Gres porcelánico. / Керамогранит.

CARATTERISTICHE TECNICHE TECHNICAL SPECIFICATIONS CARACTERÍSTICAS TÉCNICAS TECHNISCHE EIGENSCHAFTEN CARACTERÍSTICAS TÉCNICAS ТЕХНИЧЕСКИЕ ХАРАКТЕРИСТИКИ		NORME STANDARDS NORMES NORMEN NORMAS НОРМЫ	VALORE PRESCRITTO VALUES REQUIRED VALEUR PRESCRIPTE NORMVORGABE VALOR PRESCRITO ЗАДАННОЕ ЗНАЧЕНИЕ EN 14411 - ISO 13006 BIa (UGL e GL)	FAP - VALORE MEDIO* AVERAGE RATING VALEUR MOYENNE DURCHSCHNITTSWERT VALOR MEDIO СРЕДНЕЕ ЗНАЧЕНИЕ BIa UGL		
			<b>NON RETTIFICATO - NOT RECTIFIED</b>	<b>RETTIFICATO - RECTIFIED</b>	<b>MATT</b>	
<b>DIMENSIONI</b> SIZES DIMENSIONS GRÖSSEN DIMENSIONES РАЗМЕРЫ		<b>Lunghezza e larghezza</b> Length and width / Dimensions des côtés / Seitenlänge / Largo y ancho / Длина и ширина	± 0,6%, max 2 mm	± 0,3%, max 1 mm	<b>Conforme</b> In accordance	
		<b>Spessore</b> Thickness / Epaisseur / Stärke / Espesor / Толщина	± 5%, max 0,5 mm	± 5%, max 0,5 mm	<b>Conforme</b> In accordance	
		<b>Ortogonalità**</b> Wedging / Orthogonalité / Rechtwinkligkeit / Ortogonalidad / Ортогональность	ISO 10545-2	± 0,5%, max 2 mm	± 0,3%, max 1,5 mm	<b>Conforme</b> In accordance
		<b>Rettilineità degli spigoli</b> Straightness of the edges / Equerrage des angles / Kantengeradheit / Rectilinealidad de las aristas / Прямолинейность углов		± 0,5%, max 1,5 mm	± 0,3%, max 0,8 mm	<b>Conforme</b> In accordance
		<b>Planarità</b> Flatness / Planéité / Oberflächenqualität / Planicidad / Плоскость		± 0,5%, max 2 mm	± 0,4%, max 1,8 mm	<b>Conforme</b> In accordance
<b>STRUTTURA</b> STRUCTURE STRUCTURE STRUKTUR ESTRUCTURA СТРУКТУРА		<b>Assorbimento d'acqua - valore medio %</b> Water absorption - average value % / Absorption d'eau - valeur moyenne % / Wasseraufnahme - Durchschnittswert % / Absorción de agua - valor medio % / Водопоглощение Среднее значение %	ISO 10545-3 ASTM C373	≤ 0,5%	<b>Conforme</b> In accordance	
		<b>Sforzo di rottura</b> Breaking strength / Force de rupture / Bruchlast / Esfuerzo di ruptura / Усилие на излом		S ≥ 1300 N	S ≥ 2000 N	
		<b>Resistenza alla flessione</b> Bending strength / Résistance à la flexion / Biegefestigkeit / Resistencia a la flexión / Прочность при изгибе	ISO 10545-4	R ≥ 35 N/mm <sup>2</sup>		<b>Conforme</b> In accordance
		<b>Abrasiono profonda</b> Deep abrasion / Abrasion profonde / Tiefenabrieb / Abrasión profunda / Глубокое истирание	ISO 10545-6	≤ 175mm <sup>3</sup>	≤ 140mm <sup>3</sup>	
<b>SBALZI TERMICI</b> THERMAL SHOCK ECARTS DE TEMPERATURE TEMPERATURWECHSEL CHOQUES TÉRMICOS ТЕМПЕРАТУРНЫЕ ПЕРЕПАДЫ		<b>Coefficiente di dilatazione termica lineare</b> Coefficient of thermal linear expansion / Coefficient de dilatation thermique linear / Wärmeausdehnungskoeffizient / Coeficiente de dilatación termica linear / Коэффициент теплового линейного расширения	ISO 10545-8	Metodo di prova disponibile / Valore dichiarato / Declared value Test method available / Méthode d'essai disponible / Verfügbare Prüfmethode / Método de prueba disponible / Доступный метод испытания	≤ 7 МК <sup>-1</sup>	
		<b>Resistenza agli sbalzi termici</b> Thermal shock resistance / Resistance aux variations thermiques / Temperaturwechselbeständigkeit / Resistencia a las diferencias de temperatura / Сопротивление температурным перепадам	ISO 10545-9	Resistente	Resistente	Resistente
		<b>Resistenza al gelo</b> Resistance to frost / Résistance au gel / Frostbeständigkeit / Resistencia al hielo / Морозоустойчивость	ISO 10545-12	Resistente	Resistente	Resistente
<b>SICUREZZA</b> SAFETY SECURITÉ SICHERHEIT SEGURIDAD БЕЗОПАСНОСТЬ		<b>Coefficiente di attrito dinamico</b> Dynamic friction coefficient / Coefficient de frottement dynamique / Dynamischer Reibungskoeffizient / Coeficiente de fricción dinámica / Динамический коэффициент трения	DCOF BOT 3000	Slip resistant ≥ 0,42	<b>Conforme</b> In accordance	
		<b>Coefficiente di attrito dinamico</b> Dynamic friction coefficient / Coefficient de frottement dynamique / Dynamischer Reibungskoeffizient / Coeficiente de fricción dinámica / Динамический коэффициент трения	DIN 51130	In funzione dell'ambiente o della zona di lavoro. According to the space or the working area / Selon le lieu concerné ou la zone de travail / Je nach Raum oder Arbeitszone / Según el ambiente o de la zona de trabajo / В зависимости от среды или рабочей зоны	R9	
		<b>Classificazione antiscivolo</b> Non-slip classification / Classification antiderapant / Bewertungsgruppe trittsicherheit / Clasificación antideslizante / Классификация противоскольжения	DIN 51097	In funzione delle zone bagnate soggette a calpestio a piedi nudi. According to the wet area to be stepped on barefoot / Selon le type de surface mouillée parcourue pieds nus. / Je nach Nassbereich die barfuß zu betreten sind / Según de la zona mojada que se pisa con los pies desnudos / С учётом увлажняемых зон, предназначенных для ходьбы босиком	-	
<b>RESISTENZA CHIMICA</b> CHEMICAL RESISTANCE RÉSISTANCE AUX ATTAQUES CHIMIQUES CHEMICALIENFESTIGKEIT RESISTENCIA A LOS PRODUCTOS QUÍMICOS ХИМИЧЕСКАЯ СТОЙКОСТЬ		<b>Resistenza ai prodotti chimici di uso domestico e agli additivi per piscina</b> Resistance to household chemicals and swimming pool salts / Résistance aux produits chimiques à usage domestique et aux adjuvants pour piscines / Beständigkeit gegen Haushaltchemikalien und Badewasserzusätze / Resistencia a los productos químicos de uso domestico o productos para la piscina / Сопротивляемость химическим средствам домашнего применения и добавкам для бассейна.	ISO 10545-13	UB Min.	<b>Conforme</b> In accordance	
		<b>Resistenza a basse concentrazioni di acidi ed alcali</b> Resistance to low concentrations of acids and alkalis / Résistance aux acides et aux alcalis à basse concentration / Beständigkeit gegen niedrigkonzentrierte Säuren und Laugen / Resistencia a concentración baja de ácidos y álcali / Сопротивляемость кислотам и щелочам низкой концентрации			ULB Min.	
		<b>Resistenza alle macchie</b> Stain resistance / Résistance aux taches / Bständigkeit gegen Fleckenbildung / Resistencia a las manchas / Стойкость к загрязнению	ISO 10545-14	Metodo di prova disponibile / Valore dichiarato / Declared value Test method available / Méthode d'essai disponible / Verfügbare Prüfmethode / Método de prueba disponible / Доступный метод испытания		5

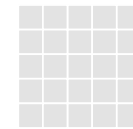
\* Valore medio dei test condotti negli ultimi 24 mesi. Average rating of tests conducted during the last 24 months. Durchschnittswert der in den letzten 24 Monaten durchgeführten Tests. Valeur moyenne des essais menés au cours des 24 derniers mois. Valor medio de las pruebas llevadas a cabo en los últimos 24 meses. Среднее значение испытаний, проведенных в течение последних 24 месяцев.

\*\* Per piastrelle rettangolari, che abbiano il lato maggiore L ≥ 60 cm, e rapporto tra i lati ≥ 3, la misurazione della ortogonalità deve venire condotta solo sul lato corto. For oblong tiles with L ≥ 60 cm and ratio length/width L/W ≥ 3, measurement of rectangularity only on short edges

La classificazione V-Shade indica il livello di stonizzazione del prodotto, classificato da V0 a V4.

The V-Shade classification indicates the level of shading of the product, ranked from V0 to V4.

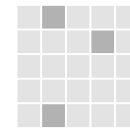
### V0



Nessuna  
None

Aucune  
Keine  
Ninguna  
нулевой

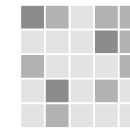
### V1



Leggera  
Light

Légère  
Leicht  
Ligera  
Низкий

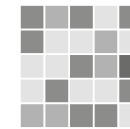
### V2



Moderata  
Moderate

Modérée  
Mäßig  
Moderada  
Средний

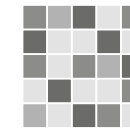
### V3



Alta  
High

Élevée  
Hoch  
Alta  
Значительный

### V4



Forte  
Very High

Forte  
Stark  
Fuerte  
Высокий

Le classement V-shade indique le niveau de mouvement chromatique au sein d'un produit. Il va de V0 à V4.

Die V-Shade-Einstufung gibt die Farbunterschiede zwischen Fliesen einer Kollektion an, die Kategorien sind V0 bis V4.

La clasificación V-Shade indica el nivel de destonización del producto, clasificado de V0 a V4.

Согласно классификации V-Shade, указывающей на уровень цветовой неоднородности изделия, нашей плитке были присвоены значения от V0 до V4.

Per tutte le istruzioni di posa, pulizia e smaltimento, consultare il sito [www.fapceramiche.com](http://www.fapceramiche.com) alla sezione Faq.

For full instructions on installation, cleaning and disposal, consult the FAQ section on the [www.fapceramiche.com](http://www.fapceramiche.com).

Pour toutes les instructions de pose, de nettoyage et d'élimination, consultez le site [www.fapceramiche.com](http://www.fapceramiche.com) à la section FAQ.

Für alle Anweisungen für das Verlegen, Reinigen und Entsorgen besuchen Sie bitte die Website [www.fapceramiche.com](http://www.fapceramiche.com) im Bereich FAQ.

Puede consultar todas las instrucciones de colocación, limpieza y eliminación en la sección de preguntas frecuentes (FAQ) del sitio web [www.fapceramiche.com](http://www.fapceramiche.com).

Для любой информации по укладке, очистке и утилизации посетите страницу Частых Вопросов на сайте [www.fapceramiche.com](http://www.fapceramiche.com).

I colori e le caratteristiche estetiche dei materiali illustrati nel presente catalogo sono da ritenersi puramente indicativi.  
Colours and optical features of the materials illustrated in this catalogue are to be regarded as mere indications.  
Die Farben und die ästhetischen Eigenschaften der in diesem Katalog abgebildeten Produkte sind als reine Richtwerte zu betrachten.  
Les coloris et les caractéristiques esthétiques des références illustrées dans le catalogue sont donnés à titre purement indicatif.  
Los colores y las características ópticas de los materiales ilustrados en este catálogo deben ser mirados como indicaciones meras.  
Цвета и эстетические характеристики описанных в настоящем каталоге материалов являются только ориентировочными.

Fap ceramiche si riserva di apportare modifiche e/o eliminare senza preavviso i prodotti declinando ogni responsabilità per danni diretti o indiretti derivanti da eventuali modifiche.

Fap ceramiche can change the indicated products without notice declining any responsibility for direct or in direct damage that depend on these changes.

Fap ceramiche se réserve le droit de modifier sans préavis les produits indiqués et décline toute responsabilité pour dommages directs ou indirects dus à éventuelles modifications.

Fap Ceramiche se reserva la facultad de modificar los productos sin preaviso, declinando cualquier responsabilidad por daños directos o indirectos que dependan de estos cambios.

Fap ceramiche behält sich das Recht vor, ohne Vorankündigung Produkte zu ändern und/oder aus dem Sortiment zu nehmen, und lehnt jede Verantwortung für direkte oder indirekte Schäden ab, die die sich aus diesen Änderungen ergeben.

Компания "Fap ceramiche" сохраняет за собой право на внесение изменений в продукцию без предварительного уведомления, снимая с себя всякую ответственность за связанный с этими изменениями прямой или не прямой ущерб.

Fap ceramiche - 4<sup>th</sup> edition (web) January 2022 - 1<sup>st</sup> edition March 2019

È vietata la riproduzione anche parziale dell'opera in tutte le sue forme.

Reproduction of this printed catalogue, even partially, is prohibited.





**MOSCOW  
SHOWROOM**

Via Ghiarola Nuova, 44 - 41042 Fiorano Modenese (MO) Italy  
tel. +39 0536 837511 - fax +39 0536 837532 - fax estero +39 0536 837542  
[www.fapceramiche.com](http://www.fapceramiche.com) - [info@fapceramiche.com](mailto:info@fapceramiche.com)



Khamovnichevskiy Val, 36 - Moscow Metro / Sportivnaya tel. +7 (495) 775 05 20  
[www.fapceramiche.ru](http://www.fapceramiche.ru) - [moscow@fapceramiche.com](mailto:moscow@fapceramiche.com)